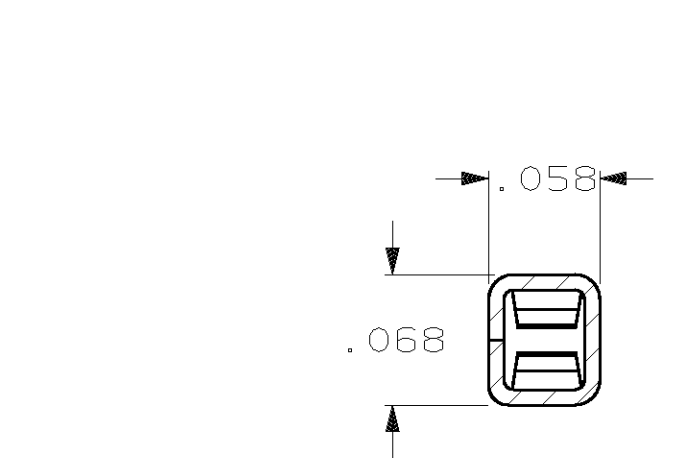
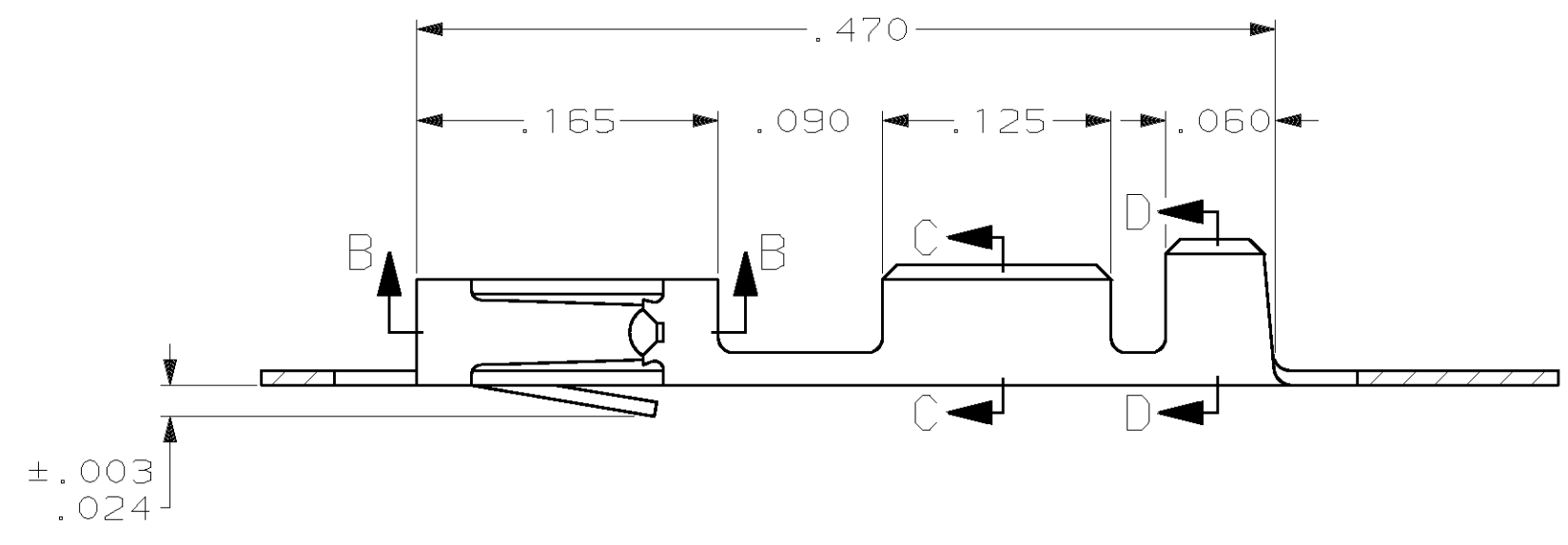
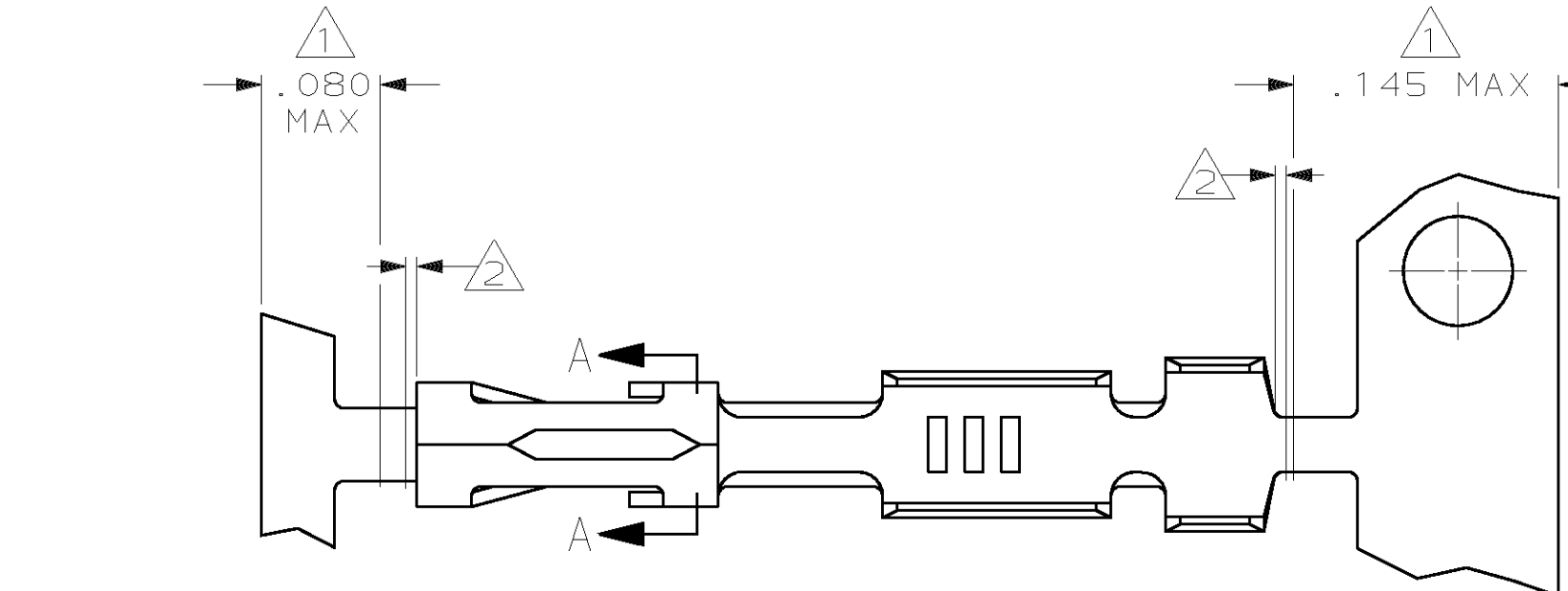


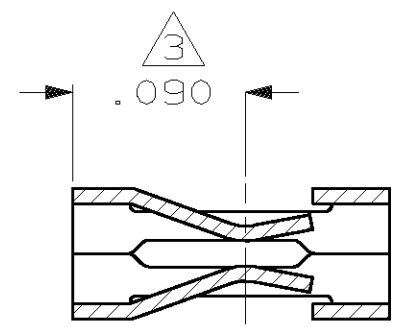
THIS DRAWING IS UNPUBLISHED. RELEASED FOR PUBLICATION _____, 1980.
 © COPYRIGHT 1980 BY AMP INCORPORATED, HARRISBURG, PA. ALL INTERNATIONAL RIGHTS RESERVED. AMP PRODUCTS MAY BE COVERED BY U.S. AND FOREIGN PATENTS AND/OR PATENTS PENDING.

| REVISIONS | | | | | | |
|-----------|---|------|-----|------------------------|-------------|------------|
| P | F | ZONE | LTR | DESCRIPTION | DATE | APPROVED |
| | | | D | REV-REDRAWN ECN 484 | | |
| | | | E | REV-ECN 672 | LDR 7-15-85 | RD |
| | | | E1 | REV-ECN 953 | LAM 2-21-86 | JLG |
| | | | E2 | REV-ECN 980 | LM 3-20-86 | JLG |
| | | | E3 | REV-ECN 1041 | HM 5-1-86 | |
| | | | E4 | OBSOLETE ECN 1821 | LDR 2-25-88 | |
| | | | F | REV ECN AR2029 | DK 9-27-88 | JLG |
| | | | G | REV ECN AR2149 | DK 10-31-88 | |
| | | | H | REV LOC & DIST AD-4171 | | 3-90 BF |
| | | | J | REV PER 0010-1407-95 | | 3-7-96 SS |
| | | | K | REV PER 0010-1496-95 | | 3-18-96 SS |
| | | | L | REV PER EC 063C-548-03 | | 31MAR04 DS |

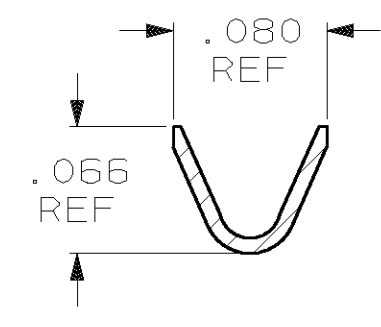
- 1 PLATING IS NOT REQUIRED IN THIS AREA.
- 2 .006 MAX LOOSE PIECE CUT-OFF.
- 3 POINT OF MEASUREMENT FOR PLATING THICKNESS, INSIDE BEAMS
- 4 .000050-.000150 PREPLATED BRIGHT TIN.
- 5 .000030 GOLD IN CONTACT AREA, GOLD FLASH ON THE REMAINDER, ALL OVER .000050 NICKEL.
- 6 .000030 GOLD OVER .000050 NICKEL ENTIRE TERMINAL.
- 7 .000050 GOLD OVER .000050 NICKEL ENTIRE TERMINAL.
- 8 .000015 GOLD IN CONTACT AREA, GOLD FLASH ON THE REMAINDER, ALL OVER .000050 NICKEL.
- 9 SHEARED EDGES ARE PERMITTED TO BE UNPLATED.
- 10 .000015 GOLD IN CONTACT AREA, .000050 NICKEL ON ENTIRE TERMINAL.
- 11 OBSOLETE PART NUMBER.



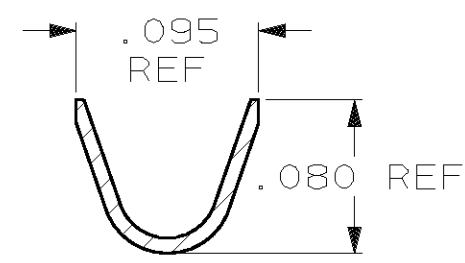
SECTION A-A



SECTION B-B



SECTION C-C
WIRE SIZE #20-#24



SECTION D-D
INSULATION RANGE .069 MAX

| LOOSE PIECE PART NUMBER | STANDARD APPLICATOR PART NUMBER | FINISH | MINI APPLICATOR PART NUMBER |
|-------------------------|---------------------------------|----------------|-----------------------------|
| 2-87309-5 | OBSOLETE | ETE | 2-87309-4 |
| 2- -3 | OBSOLETE | ETE | 2- -1 |
| 2- 11 -0 | 1- 11 -8 | 9 10 | 1- 11 -9 |
| 1- 11 -7 | 11 -6 | 8 | 1- 11 -2 |
| 1- 11 -6 | 11 -5 | 7 | 1- 11 -1 |
| 1- 11 -5 | 11 -4 | 6 | 1- 11 -0 |
| 1- -4 | -3 | 5 | -9 |
| 1-87309-3 | 87309-2 | 4 | 87309-8 |

| | | | |
|---|---|-------------------------------------|---------|
| UNLESS OTHERWISE SPECIFIED DIMENSIONS ARE IN INCHES. TOLERANCES ON: DECIMALS ± .005 ANGLES ± | CONTRACT NO | AMP INCORPORATED Harrisburg, Pa. | |
| | DR L D RINGLEY 1-28-85 | | |
| MATERIAL | CHK 1-30-85 R J DAVIS | CONTACT, MOD V = CRIMP SNAP-IN | |
| PHOS. BRONZE .008 THICK | APPD 1-30-85 R J DAVIS APPD 1-31-85 C LINDGREN | | |
| FINISH | DSGN APPD | SIZE | FSCM NO |
| SEE TABLE | OTHER APPD | C | 00779 |
| | | DRAWING NO | |
| | | 87309 | |
| | | SCALE | SHEET |
| | | 10:1 | 1 |